

Stephanie Clark

Broward County, Florida
Outstanding Florida Waters
Critical Habitat for
Staghorn and Elkhorn Coral
May 6, 2006

Outstanding Florida Waters

- Application since May 3, 2003
- We continue to inquire about the status of our application and have not received an answer
- These reefs support a multi-billion dollar industry
- FDEP has failed to address the issue of no Public Workshop on our application

Outstanding Florida Water







Critical Habitat for Threatened Species

- North of Port Everglades has some of the farthest-north Staghorn reefs
- With the current rise in Sea Surface Temperatures these reefs may play a crucial roll in reefs migrating northward
- Lost 8 miles of nearshore Staghorn habitat to Broward Dredge and Fill Project last summer





**Corals Buried and Smothered by Beach Dredge Fill
Hollywood Florida Aug 2005**



Threatened Species being Buried. This coral has been completely buried in sand since photo was taken

Broward Dredge and Fill Project

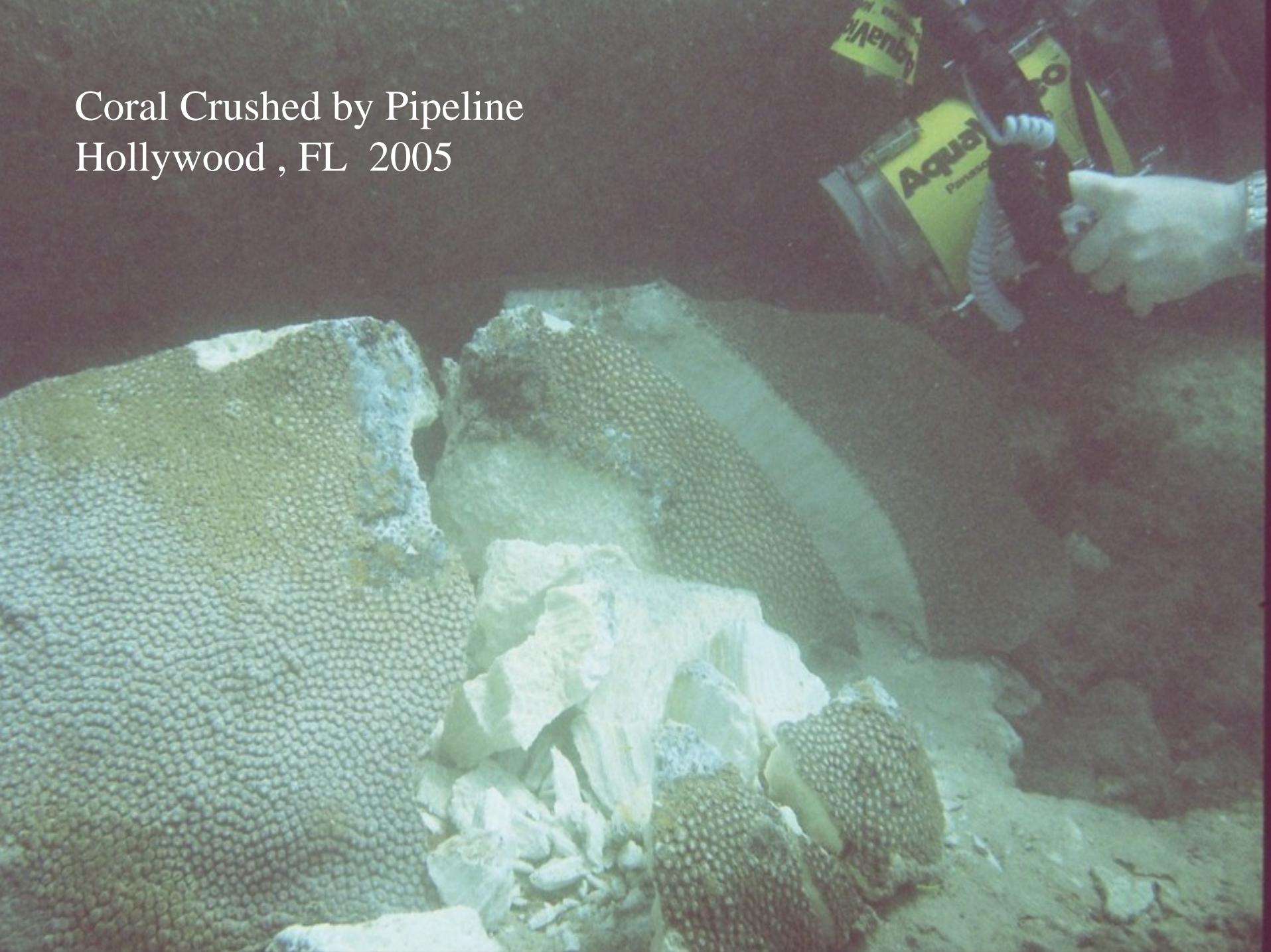
- We reported that reefs were being buried and smothered beyond the ETOF Estimated Tow of Fill
- Reported bleaching in the area from water Temperature
- Asked that Project be halted until bleaching event ended
- Project continued burying miles of reef and killing corals

- Reported corals being crushed by the Pipeline corridors
- Rapid Response to Coral Damage Workshop held in February from Infrastructure Installation and Ship Groundings no permitted projects were allowed to be discussed
- 8 months later - little had been done to restore the corals damaged
- Still do not know the total amount of damage since we do not have access to the reports

Fill Pipe on large coral head



Coral Crushed by Pipeline
Hollywood , FL 2005



Southeast Florida Coral Reef Initiative

- No Stakeholder meetings since November 2004
- Currently working on projects 3 years in the future without stakeholder meetings
- We have been denied a seat at the table on the FDOU and Awareness groups
- We must return stakeholder involvement to the SFCRI process

For Additional Information Contact

Cry of the Water

Stephanie Clark

Reefteam2@yahoo.com

www.cryofthewater.org

954-753-9737

P.O. Box 8143

Coral Springs, Fl 33065